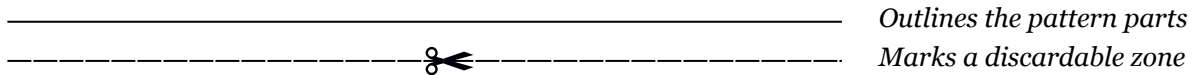


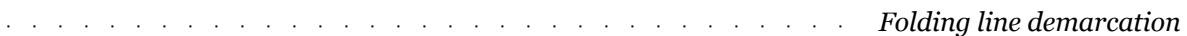
First off, thanks for purchasing this pattern!

- Print this pattern using the US Letter type format regardless of whether you're in Europe or the US and make sure that you disable the page margins from the printing options before you start.

- The parts outlined with a simple line and filled with a gray shade need to be cut out and assembled together after trimming the areas marked with a dashed line and a scissor. Ex:



- The dotted lines represent areas where the leather needs to be folded. Not to be confused with the hollow circles which demarcate rivet holes or stitching holes that are to be punched out. Ex:



- The puzzle piece that you may encounter is there for making sure you are aligning the right pieces in their proper order.



- The outlined circles need to be punched out and the size of the holes will be left out to your preference depending on what type of accesories or tools you have in use (Example: rivets, needles, snap fasteners, stitching punches, hole punches, etc). Ex:



- When you're done with cutting and assembling the pattern parts, I advise using paper adhesive tape in order to steady the pattern on top of the leather. After you've made sure everything is in place and not going anywhere you can begin work by firstly punching out the stitching holes and any other marked out holes, then proceed to cutting the outlined shapes, in this precise order. Try leaving the borders last in case you have to work with a more complex model, such that the pattern will stay fixed on top of the leather all throughout the process.

Required materials

For this project you will require 4 D-rings with at least 20 mm inner gauge, 1 zipper at least 350 mm long and 16 rivets although 8 of them are required for the straps and you can use any other method for fastening the straps ends. I used 2 - 3 mm (6 - 7 oz) leather for parts 6 and 7 and 1.5 - 2 mm (3 - 4 oz) leather for the rest. You may opt for using leather of whatever weight for the parts I mentioned above but they are meant to shape the bag in a particular way and I recommend following my example in order to achieve the best result. Also be sure to have some adhesive paper tape (masking tape) at hand as it will be required further on.

Optional tools

You may use whatever tool you have at hand for punching out the stitching holes but should you happen to have access to a Craftool no3 punching chisel set, it would considerably lower the amount of work as the holes are spaced to suit using such tools. You may google 'Tandy 88045-6' for more information.

Printing guidelines

Print the pattern in the US Letter format and make sure you check the 'Fit to page' button or depending on your printing medium, 'Disable page margins'. If you're not from the US you may print this pattern on A4 paper without any issues, just make sure that you select the proper format (US Letter) when printing. The idea is to print the pattern on the whole page and not fit it to the printable area. This way we ensure that every part will be printed at a 1:1 scale. If you haven't ever used these settings when printing then be sure to print a test page before printing the whole pattern. Also keep in mind that names for the printing settings may vary between the many different types of software out there even though they all lead to the same results.

Preparing the pattern

The way I proceed when cutting the paper parts is to loosely cut around their contours and use them afterwards to mark the leather parts that need to be cut from the larger leather sheets. Make sure to join the parts that display half of a puzzle piece as mentioned in the first page and don't forget to measure the 1 inch reference square situated on every pattern page just to make sure you printed the pages using the right settings.

Preparing the leather parts

After loosley cutting the paper and leather parts I then strap them on top of each other using adhesive tape to tightly fit the paper parts on top of the leather ones. This helps a lot when punching out the stitching holes and cutting out the parts. Make sure to firstly punch out every hole that needs to be punched before proceeding to cutting out the actual parts as doing it the other way around will make things harder. Also make sure you use a sharp blade as cutting through paper and leather at the same time tends to rip the paper a bit, especially the low quality type. If you wish to dye and condition your leather and alternatively prepare the edges in case you used thicker leather, then this is the right moment.

Assembling the back and front

*The back and the front of the bag will be assembled using parts **1, 2, 3, 1a, 2a, 3a**. I used this notation because these parts share the shape of their corresponding parts followed by the letter 'a' but the leather type and color I used for each are different. For example, part **1** is identical to part **1a** in shape but they should differ in color for achieving the intended effect observed in the reference model. Be sure to mark every part with its corresponding number somewhere at the back and thus outsmart me, the fool that I was not to. This will really prevent confusion further along the process.*

*We will pick one face of the bag and use part **1**, sided by parts **2a** and **3a**. If we can imagine the finished bag sitting on a table say, then part **1** will be in the middle, part **2a** will be the uppermost and part **3a** the*

bottommost. This is an **important** aspect as parts **2** and **2a** will not fit when matched with parts **7**, the same case being for parts **3** and **3a** that won't fit the size of the combined parts **6**.

Another **very important** thing is that parts **1** and **1a** should be stitched on top of their counterparts so assuming you're stitching together parts **1**, **2a** and **3a**, then part **1** should be overlapping the rest.

Having settled the way in which these parts are to be fitted, proceed to saddle stitching parts **1**, **2a** and **3a** and after repeating the process for parts **1a**, **2** and **3** go ahead and join together the resulting sheets on their corresponding edges. For convenience we'll call this assembly '**the bag's wall**' from now on.

Assembling the interior pockets

You may observe the pairs of parts **4**, **5** and **11**, **12** which when sewn on top of each other will make the interior pockets. Now I chose to expose the grain part of all these parts so for example when assembling the smaller pocket, you need to sew part **4** with the flesh side on top of part **5**'s grain side. Of course this is only a matter of preference so please get to sewing these parts together in whatever way and do the same for parts **11** and **12**.

Setting the zipper

The zipper needs to be set centered between parts **9**. I glued the zipper to each part first before stitching them together as this helps aligning the zipper properly. Not much else to be said here so please make it snappy so we may move further.

Finishing the body of the bag

Well now, since we started with a light warm up then we may finally get to have some sport. We need to sew one of parts **6** between the combined parts which we started the project with. You need to bare in mind that the pockets will need to be sewn along this step as well so there will be places where three layers of leather will overlap.

Also I need to remind you that you need to match the proper edge of **'the bag's wall'** to the pointy edge of part **6** as hinted in the pattern.

Having said that, the first stitch should intersect one of the pockets in its pointy middle, one of the pointy halves of **'the bag's wall'** and the edgemost point of part **6**. The last stitch should meet the other pocket in the middle in its pointy edge, the other pointy half of **'the bag's wall'** and the other edgemost point of part **6**. This might be a bit confusing but you may clear things up a bit by analyzing the pictures of the bag.

When done, you may join the other part **6** from where you left off and if you're really familiar with leather then you may start with a cross stitch that should join the edges of parts **6** and then go along with saddle stitching the other parts as well. You may also leave the cross stitching parts for last if it makes you more comfortable.

If you got past this point then you may sew one of parts **7** between the parts that make **'the bag wall'** but on the lowermost side of it as hinted on the pattern parts. The combined parts **7** will make the lowermost rim of the bag but for simplicity we'll not join them just now but after we're done stitching only one of them to the rest of the assembly. The parts are long enough as they are and I reckoned it may be simple doing it this way.

When you're done you may stitch the other part **7** along the latter, starting with cross stitching them together and continuing with saddle stitching it along the rest of the assembly.

You should now join the edges of the combined parts and you will need to start and end with cross stitching, saddle stitching along the ends of **'the bag's wall'**. You may also leave the cross stitching for the end and only join the ends of the **'the bag's wall'** using saddle stitching but this really depends on your experience with leather or on your personal preference. I myself left the cross stitching for last but I was still unsure if everything will fit well in the end.

Stitching the top and bottom

*Presuming everything worked like a charm then you may proceed towards sewing the bottom, which is part **8**, to the body of the bag, the parts you've wrestled up to this point. You need to align the **middlemost point**, as hinted in the pattern, to one of the places where parts **7** join together at their ends. You may also stitch this part overlapping the other parts or the other way around. I chose the latter way because even though it is the most time consuming, it renders the best result.*

*The top of the bag, the joined parts **9**, need to be stitched with the **middlemost points** aligned with the places where parts **6** join together at their ends. Notice how there are 2 dents along the outer edges of parts **9**. You will need to insert parts **10** here and set them using rivets. Also don't forget that each of parts **10** encloses around a D-ring which you must place inside the loop before setting the rivets.*

*I used simple leather straps for the handles, fastened together with 2 rivets at each end. Part **13** resembles a strap with holes marking where the rivets are to be fitted and its total length and width. Use this part to mark the rivet holes and to cut your straps properly and mark that there is only one representation for it as the second would have, for lack of room, necessitated another page.*

And you're done. I hope you had fun and I'd like to hear from you. For more of my works be sure to bookmark my web page

<https://leatherhubpatterns.com> or [my Etsy page](#). Thank you again!

