

HYBRID



karlovadesign.com

Materials:

I used 5 oz chrome tan for the body and 8 oz for the straps and pocket closure. Also, the pocket liner should be quite thin, like 2-3 oz.

Hardware:

- 2 x 1” buckles
- 4 x 1” D-rings or O-rings
- 2 x 3/4” buckles
- 2 x 1” swivel hooks
- 1 x button stud
- Rivets, snaps

Tools:

- Scissors, knife (paper knife or rotary cutter would also work).
- Stitching irons: my pattern is made for 5mm stitching irons (5 stitches per inch). If you are willing to use any other size please make sure that the hole count is the same where it has to be the same.
- Needles - according to your thread size, a pair of harness needles.
- Mallet, rivet setter, snap setter, hole punch, 1” and 3/4” bag punches (oblong).
- Good to have a button hole punch too, for the pocket closure.
- Skiver.

Instructions:

Print the pattern at actual size (100%). Use the reference on top of each page to make sure everything is printed correctly. Join the pages together. Cut the pieces.

Start with the pocket, first, stitch the darts on the pocket front. You can use parallel stitches like I did or X-stitches would work too.

Assembling the pocket: Place the pocket lining on the table grain side up, place the pocket front on top of it also grain side up, there is a line on the pattern that shows how to align them (the pocket front is being stitched in 1 hole below everything else). Place the body on top of all this stuff and align the pocket cutout with other pieces. Stitch the pocket. Install the button stud on the pocket front. Pass the flap part of the pocket lining through the remaining hole towards the grain side of the body and stitch the flap, don't forget to insert the pocket closure in the middle. Stitch the small seam above the closure. When flap is done, glue these two flap parts together from the inside so they don't make a “pocket” where all the small stuff is going to fall otherwise.

Install two snap posts on the front part of the body.

Install the snaps on the gussets. Stitch the gussets onto the body with overlapping seam body being on top of the gusset in the seam, starting at the front part, mark the holes where the lower pair of D-rings need to be sewn in (with their respective little straps). The holes on those little straps are at a greater distance from the edge, this is not a mistake, it is done to prevent the corners from sticking out of the seam with use.

When you finish stitching the gussets you will notice you have a few more holes left before the horizontal stitching line. Continue stitching up to that line (mostly decorative purpose). This space is left to let the body and flap wrap around the bulky opening without tension or bending.

0cm 1cm 2cm 3cm 4cm 5cm

A-1

1in 2in 3in

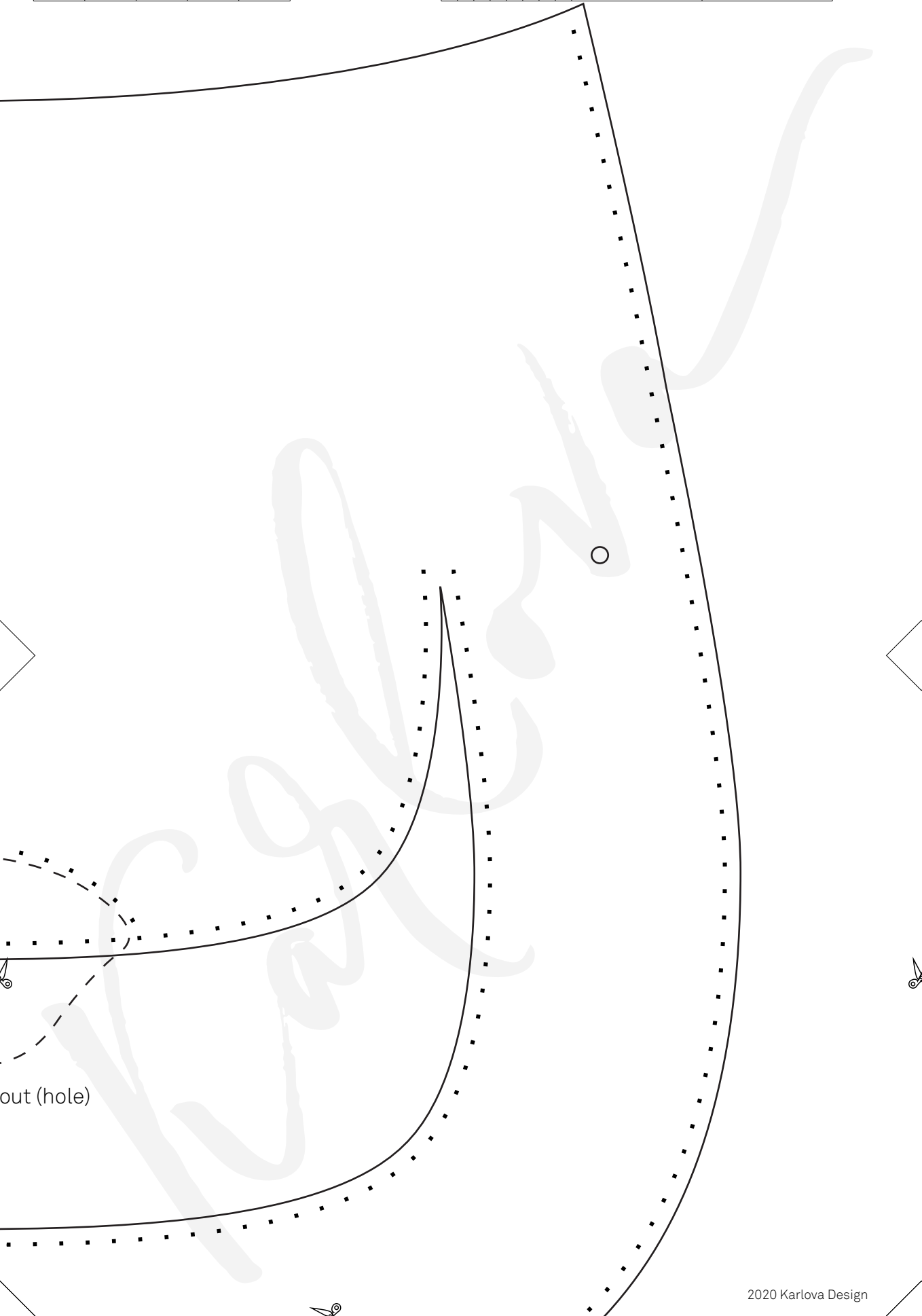


This is a cut

0cm 1cm 2cm 3cm 4cm 5cm

A-2

1in 2in 3in



out (hole)

TOP KEEPER

These 2 keepers are sewn on the
“horns” on top (see flap pattern)

TOP KEEPER

FLAP

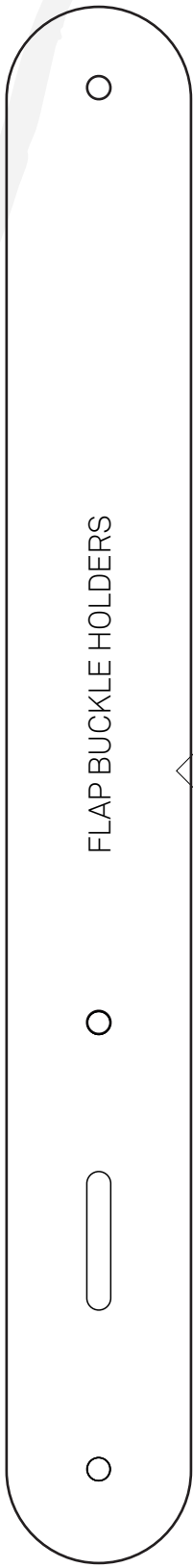
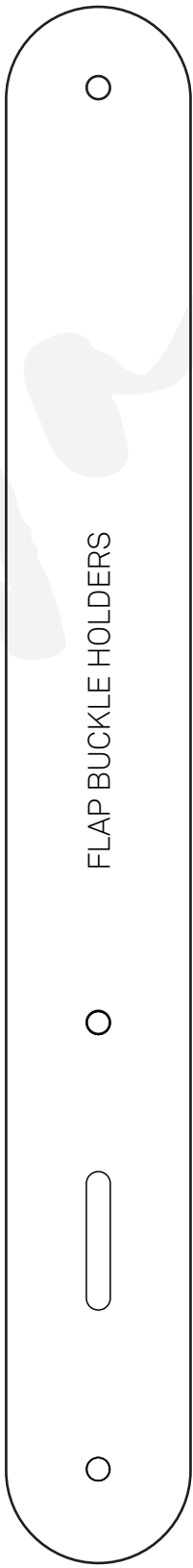
Strap keeper length may vary slightly depending on
thickness of your leather.

1” STRAP KEEPER

1” STRAP KEEPER

1” STRAP KEEPER

1” STRAP KEEPER



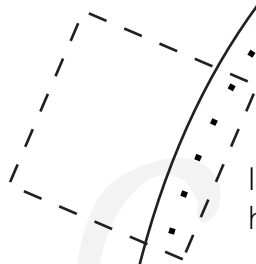
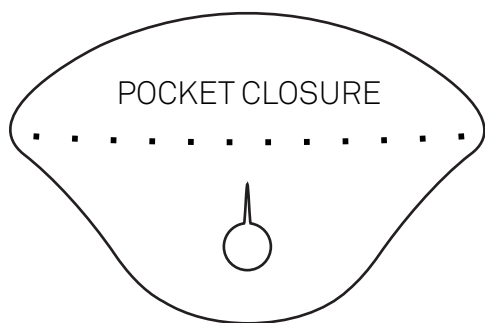
0cm 1cm 2cm 3cm 4cm 5cm

B-1

1/8 3/8 1/2 5/8 3/4 1in

2in

3in



Insert the D-ring
holders here

0cm 1cm 2cm 3cm 4cm 5cm

B-2

1in 2in 3in

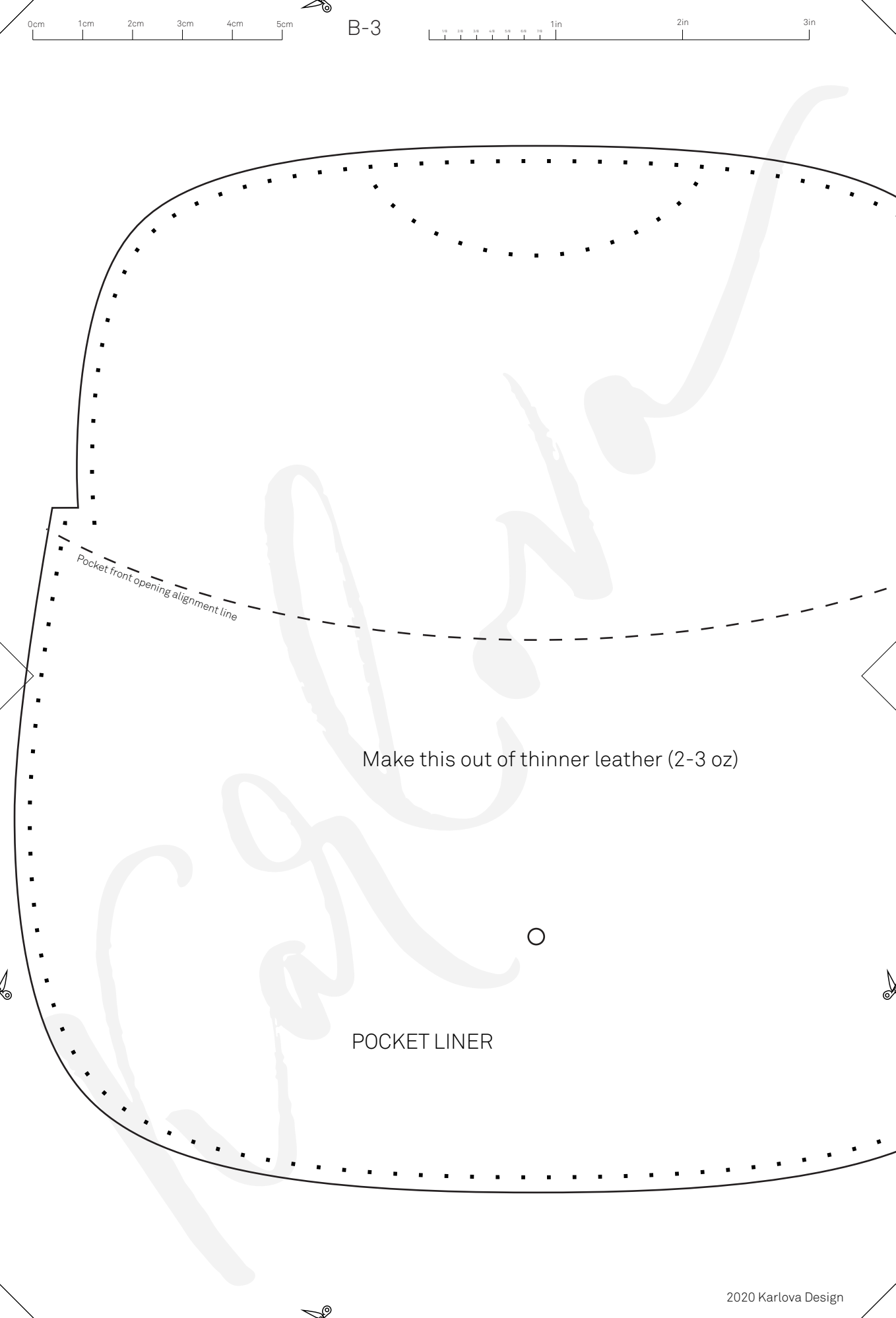


Insert the D-ring
holders here

0cm 1cm 2cm 3cm 4cm 5cm

B-3

1in 2in 3in



Pocket front opening alignment line

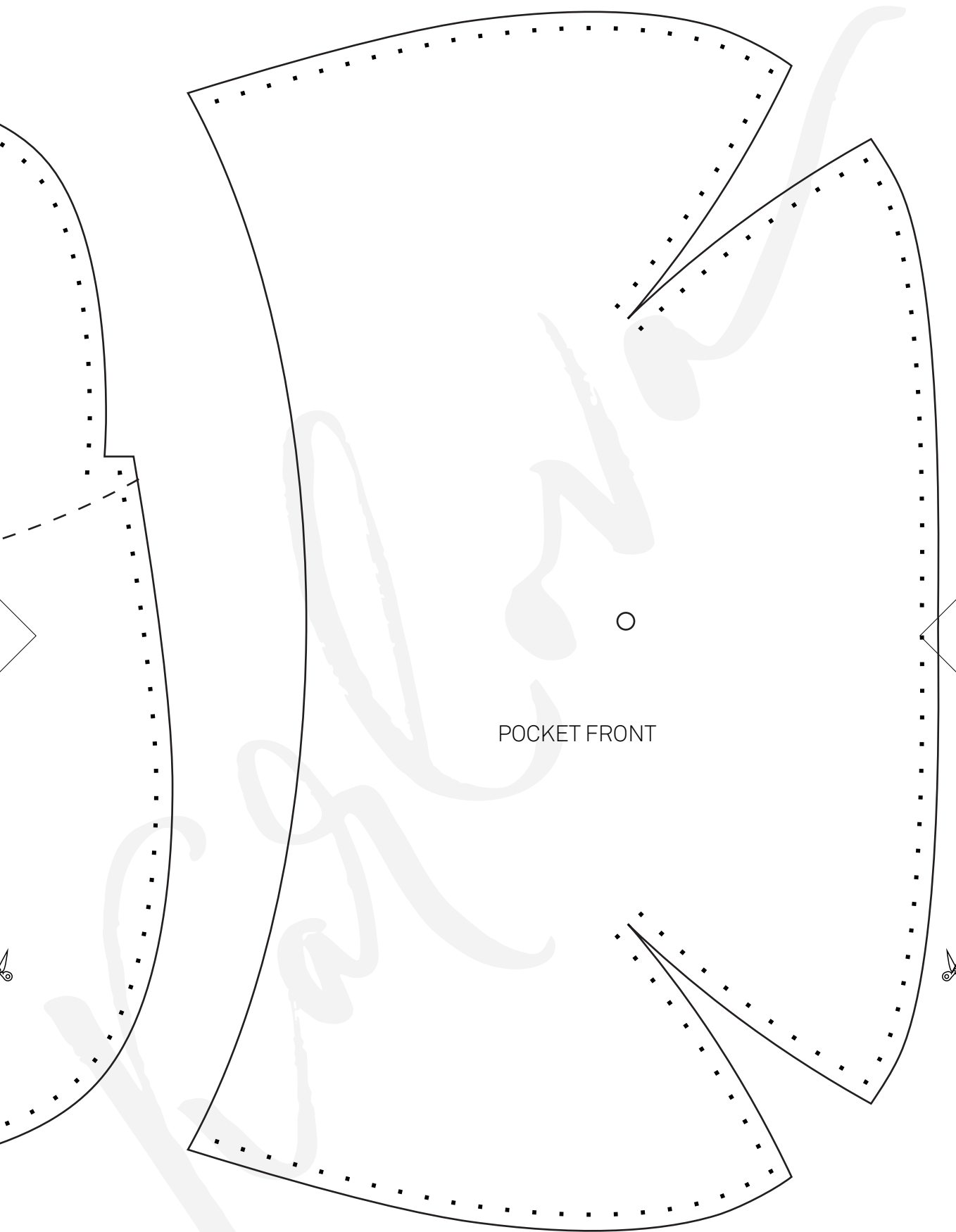
Make this out of thinner leather (2-3 oz)

POCKET LINER

0cm 1cm 2cm 3cm 4cm 5cm

B-4

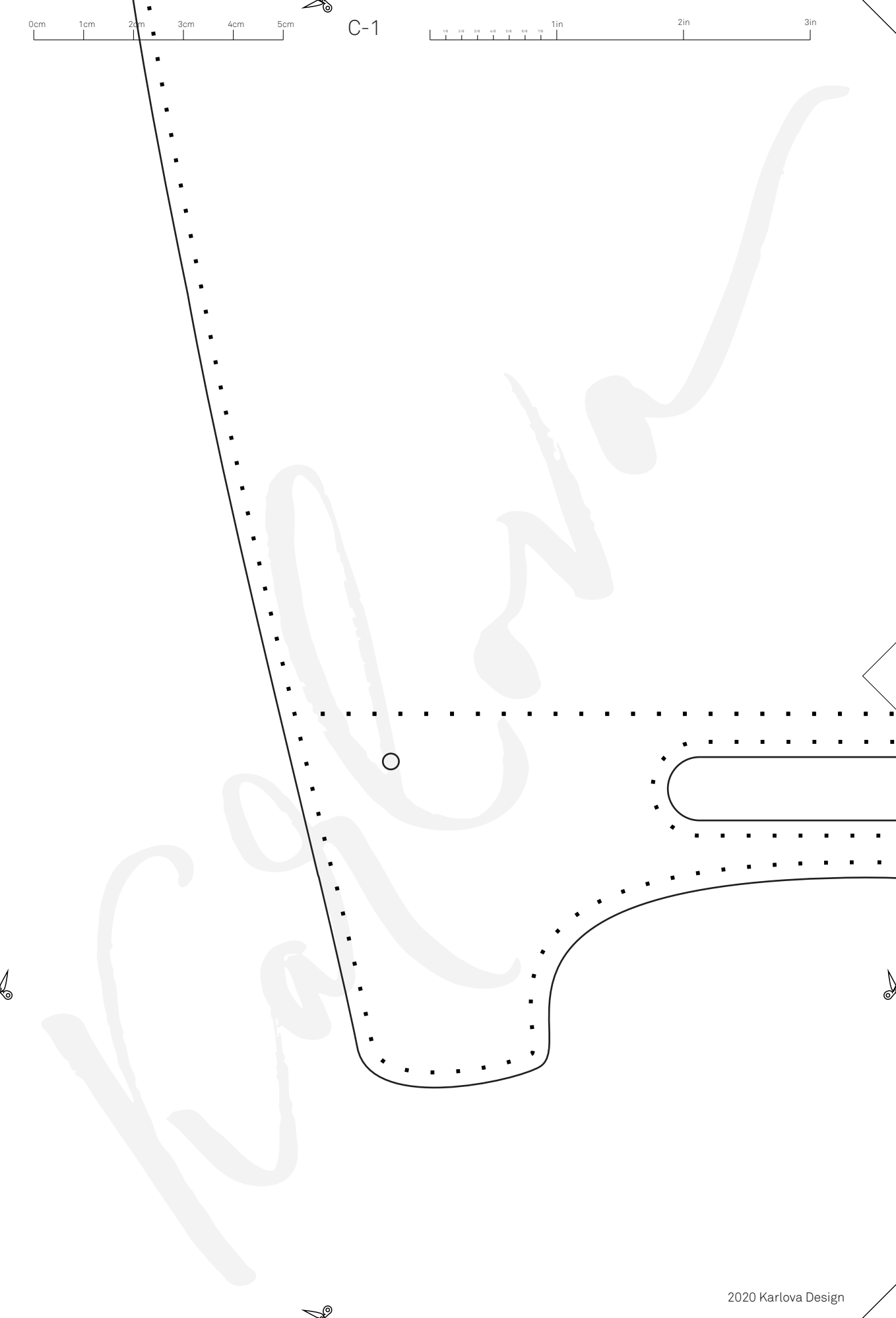
1/8 1/4 3/8 1/2 5/8 3/4 1in 2in 3in



0cm 1cm 2cm 3cm 4cm 5cm

C-1

1in 2in 3in



0cm 1cm 2cm 3cm 4cm 5cm

C-2

1/8 1/4 3/8 1/2 5/8 3/4 1in

2in

3in

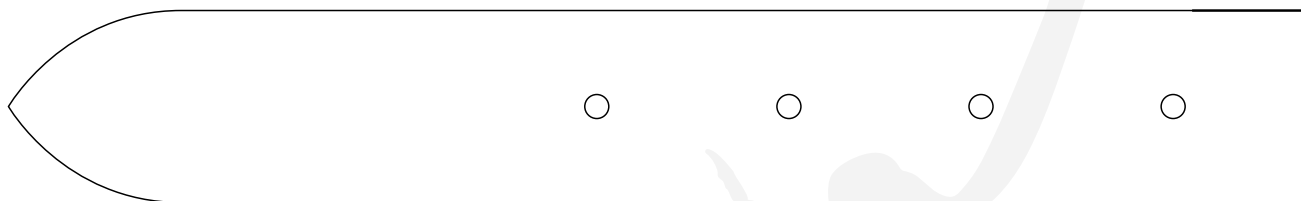
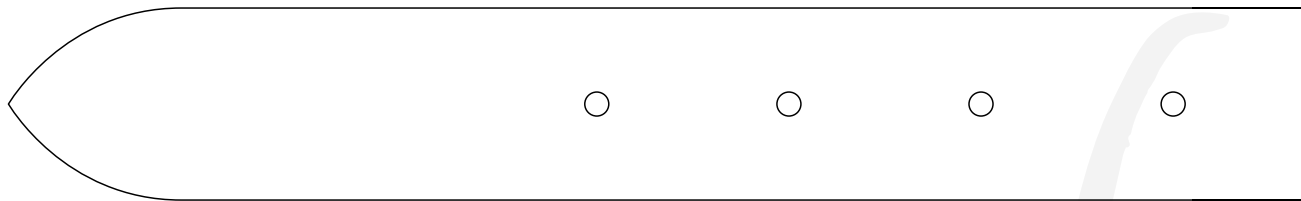
BODY

- 3/4" STRAP KEEPER
- 3/4" STRAP KEEPER
- 3/4" STRAP KEEPER
- 3/4" STRAP KEEPER

0cm 1cm 2cm 3cm 4cm 5cm

C-3

1in 2in 3in



You can adjust length of these straps if you need longer straps



0cm 1cm 2cm 3cm 4cm 5cm

C-4

1in 2in 3in



LARGE TOP D-RING STRAP



LARGE TOP D-RING STRAP



I PART



I PART



D-RING STRAP



D-RING STRAP



SHOULDER STRAP BUCKLE HOLDER



SHOULDER STRAP BUCKLE HOLDER

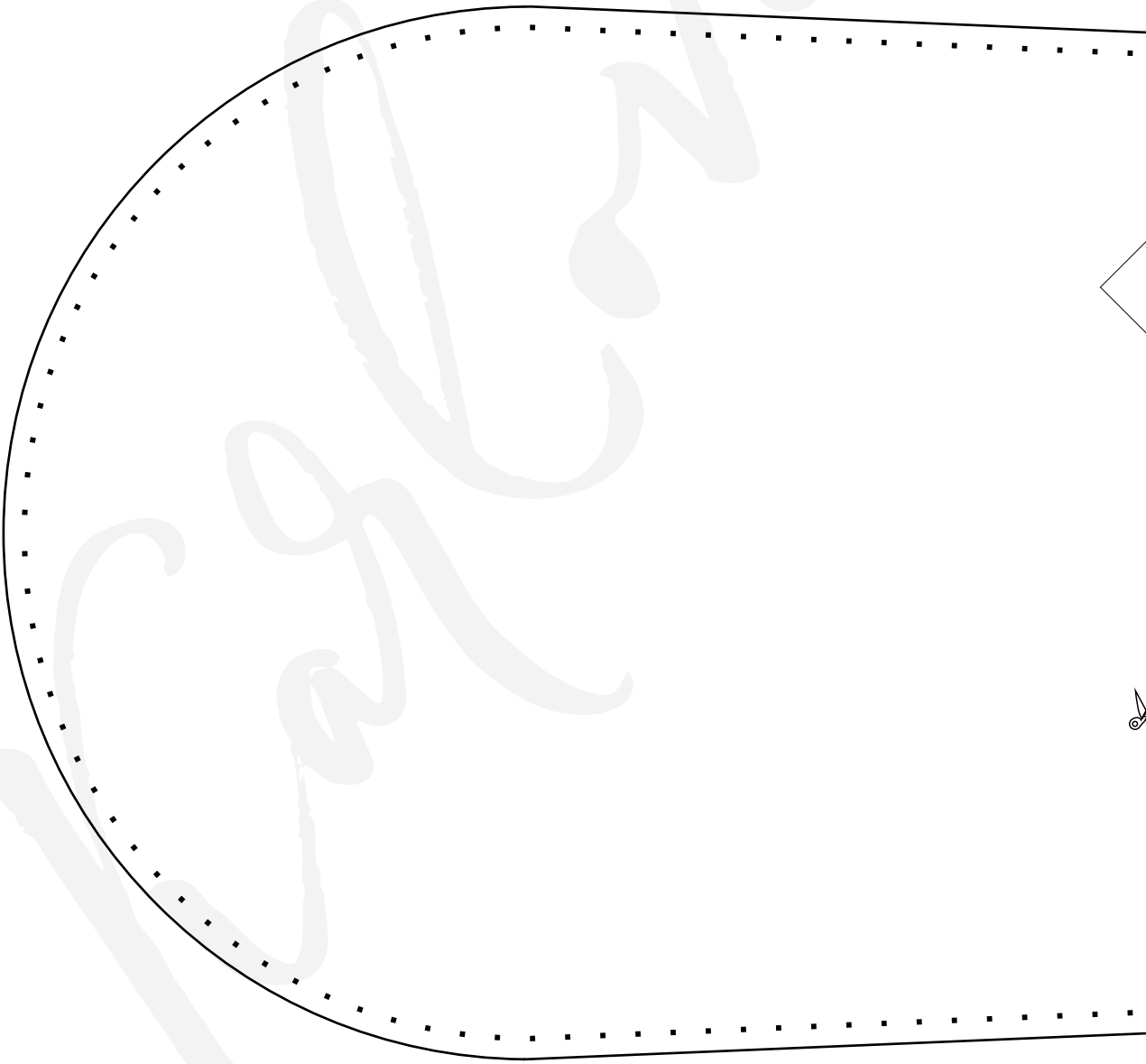
0cm 1cm 2cm 3cm 4cm 5cm

D-1

1/8 3/8 5/8 7/8 1in 2in 3in



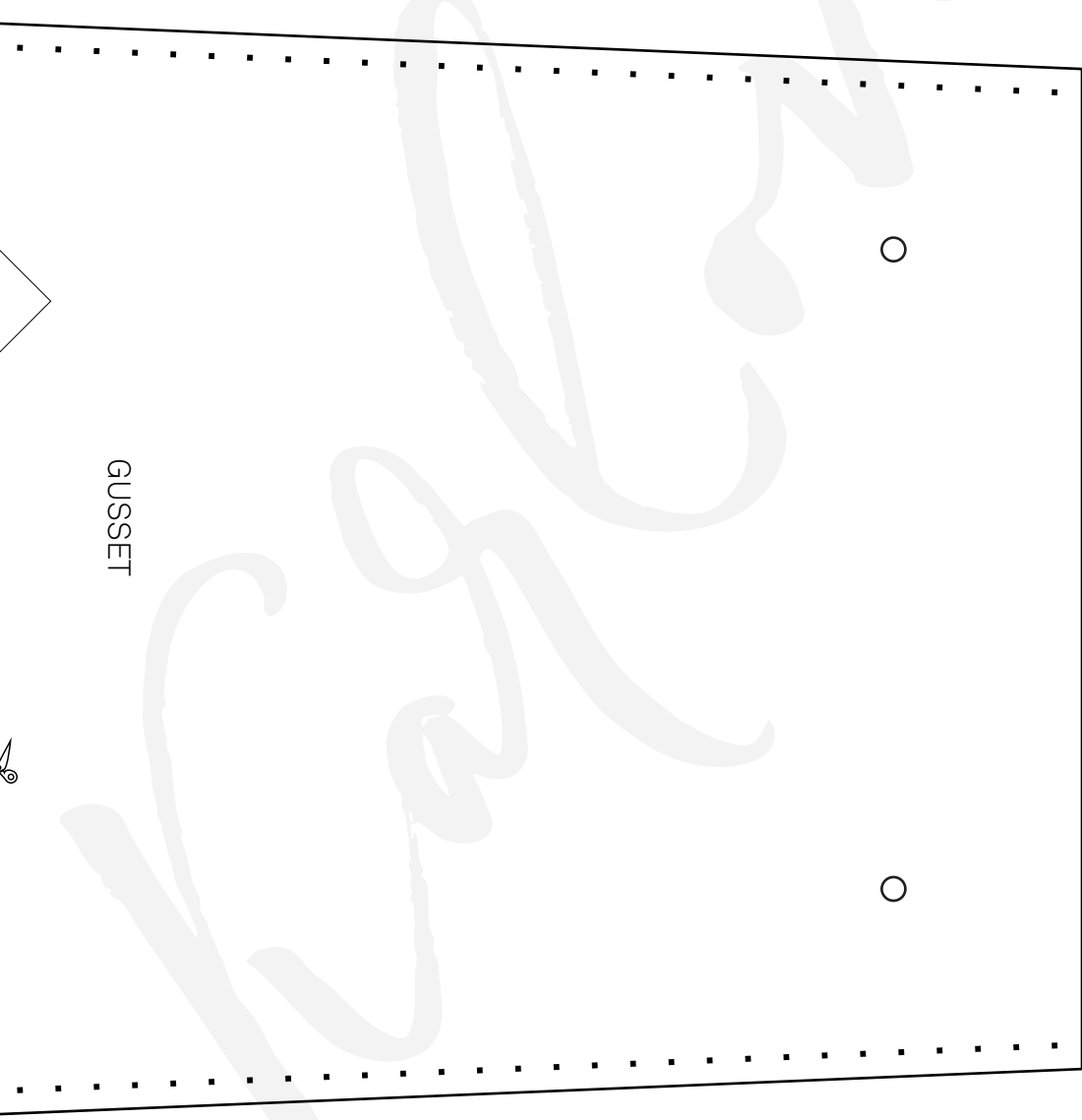
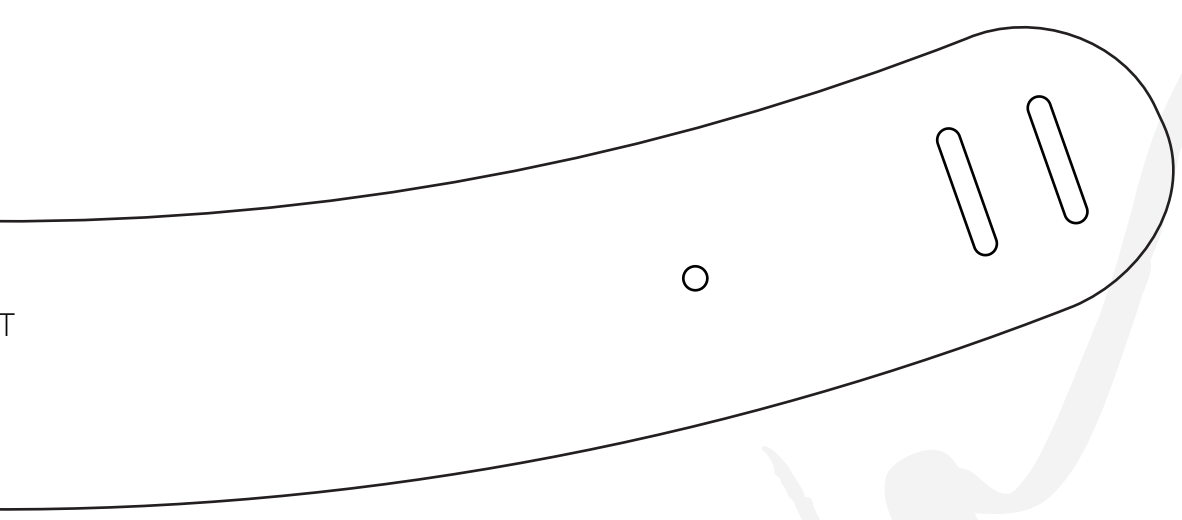
SHOULDER STRAP TOP PART



0cm 1cm 2cm 3cm 4cm 5cm

D-2

1/8 1/4 3/8 1/2 5/8 3/4 1in 2in 3in

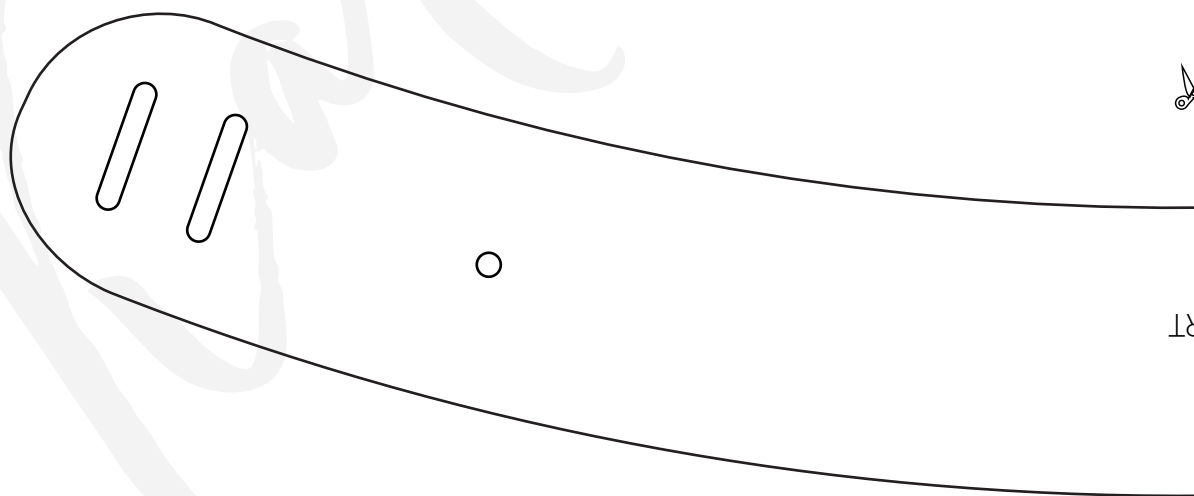
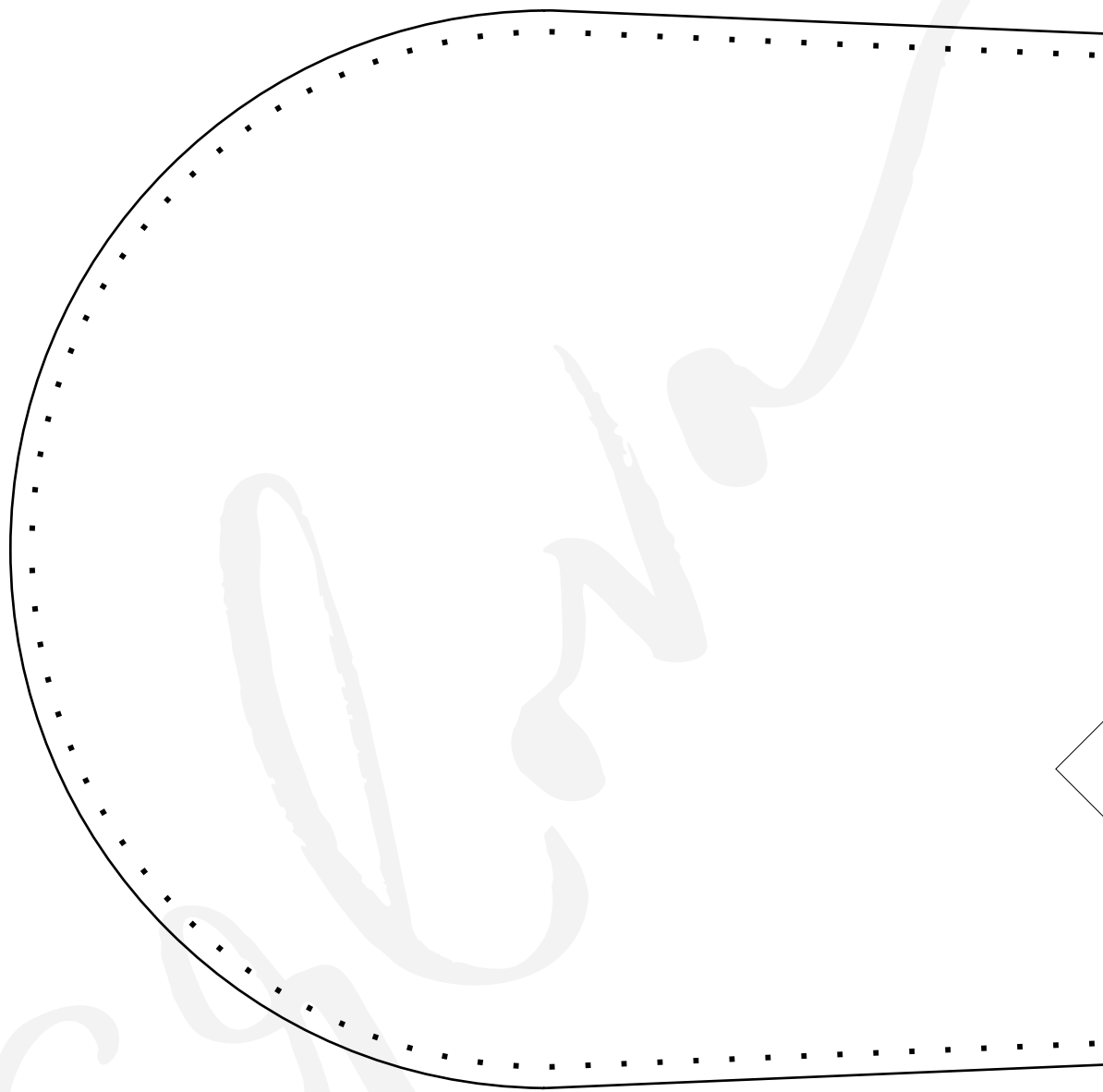


GUSSET

0cm 1cm 2cm 3cm 4cm 5cm

D-3

1in 2in 3in



0cm 1cm 2cm 3cm 4cm 5cm

D-4

1in 2in 3in

GUSSET

SHOULDER STRAP TOP PAF

Let's stitch the flap. On the flap pattern, all the stitching holes that are below the horizontal stitching line, are purely decorative. You can skip this part if you want, I personally like how it looks, especially around the snaps. If you decide to do this stitching, I would say do it before attaching the flap to the body.

Place the flap over the top back part of the body flesh to flesh, and stitch around, starting with horizontal stitching line and everything that is above it. Don't forget to stitch 2 little keepers on the "horns". Then stitch around the handle opening.

Moving on to the straps, keepers and buckles. On your straps you may want to skive those parts that make things bulky - on the buckle ends for example and where the rivets are attached. I sed 8 oz leather and it was absolutely necessary, if you are using 5-6 oz probably that won't be so critical.

Set the snap sockets on the bottom of the flap, placing the flap buckle holders on top of the flap and attaching their ends with the snap sockets to the flap. Assemble two of the 1" keepers and attach the buckle, placing one keeper on each side of the rivet (one keeper goes between the rivet and the snap, another between the rivet and the buckle), place an 1" (larger) closure strap below the buckle flesh side up, then rivet the assembly to the bag. Repeat on the other side.

It is a good idea to assemble all the rest of the keepers beforehand so you won't get distracted with them anymore.

Take the top part of the shoulder strap (curved one), and attach the buckle with two rivets on the end that has 2 oblong holes, placing the small 3/4" keeper between the rivets and attaching the smaller closure strap on the back side of the shoulder strap to the rivet that's closer to the edge, flesh side up. Buckle up:

1. 1" keeper goes on the larger closure strap (the one attached to the flap).
2. Pass this strap through D-ring.
3. Pass the strap back through the keeper.
4. Pass it through the buckle.

The other end goes like this:

1. Pass the little strap through the smaller 3/4" keeper.
2. Pass the strap through the D-ring that you attached to the larger strap previously.
3. Pass the strap back through the keeper.
4. Pass it through oblong holes on the shoulder strap, from the grain side.
5. Get it out, at the grain side and buckle up.

I know there are too many straps and keepers and buckles and it can be quite confusing, take your time and look thoroughly at the pictures to see how it is all assembled, or maybe you can come up with your own way of buckling this system :)

Take the bottom ends of the shoulder straps, attach them with 2 rivets placing them grain side up, underneath the top part of the shoulder strap.

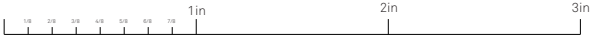
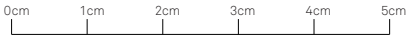
Take 2 swivel hooks and attach them to the ends of the straps with rivets. Connect them to the D-rings on the bottom.

Any questions or comments, e-mail me: lissius@gmail.com.

Join our Karlova Leatherwork Patterns Group on Facebook!
www.facebook.com/groups/karlovadesign







TEST PAGE

Make sure everything is the right scale and you can see the black border around this page on all sides.

