

Assembly instructions



Difficulty level: advanced
Completion Time 12 - 18 hours

NECESSARY TOOLS

B&W Printer



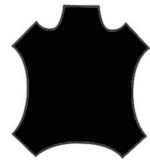
Scissors or a cutter



Hole Puncher



Approx 20 square feet of leather



Thread and needles



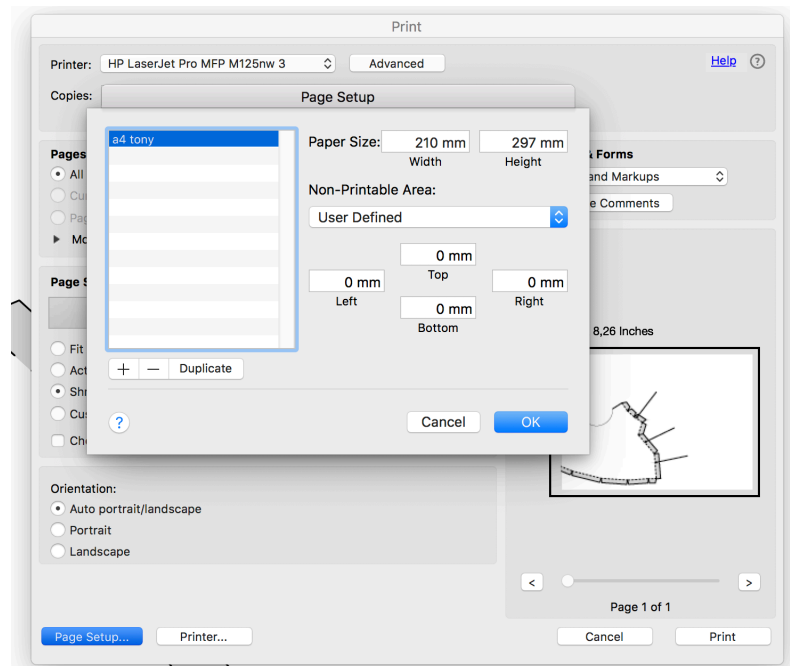
7 x 20 mm Buckles and a few rivets

Zipper

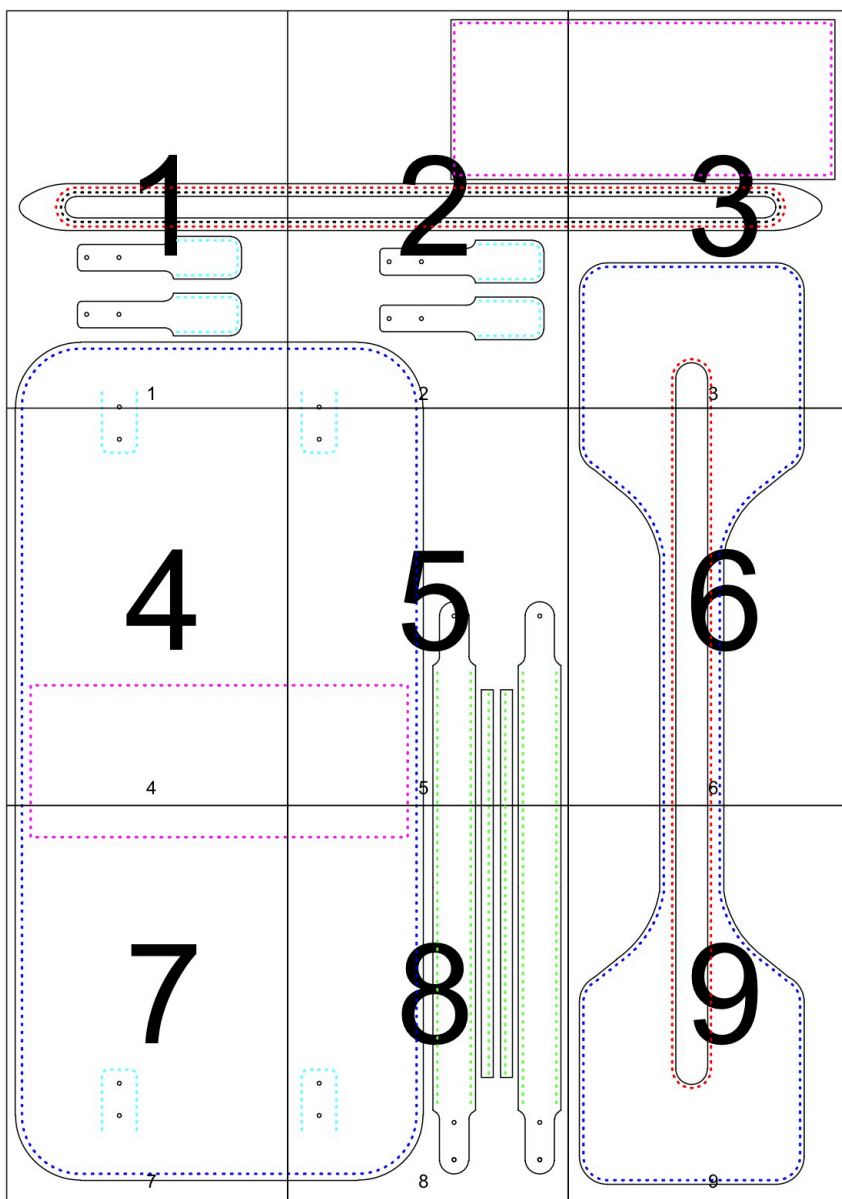
PRINTING THE PATTERN

Set up your printer to A4 paper with no margins on landscape mode.

Alternatively you can use “letter” format which is approximately the same size and will not impact the size of the product significantly

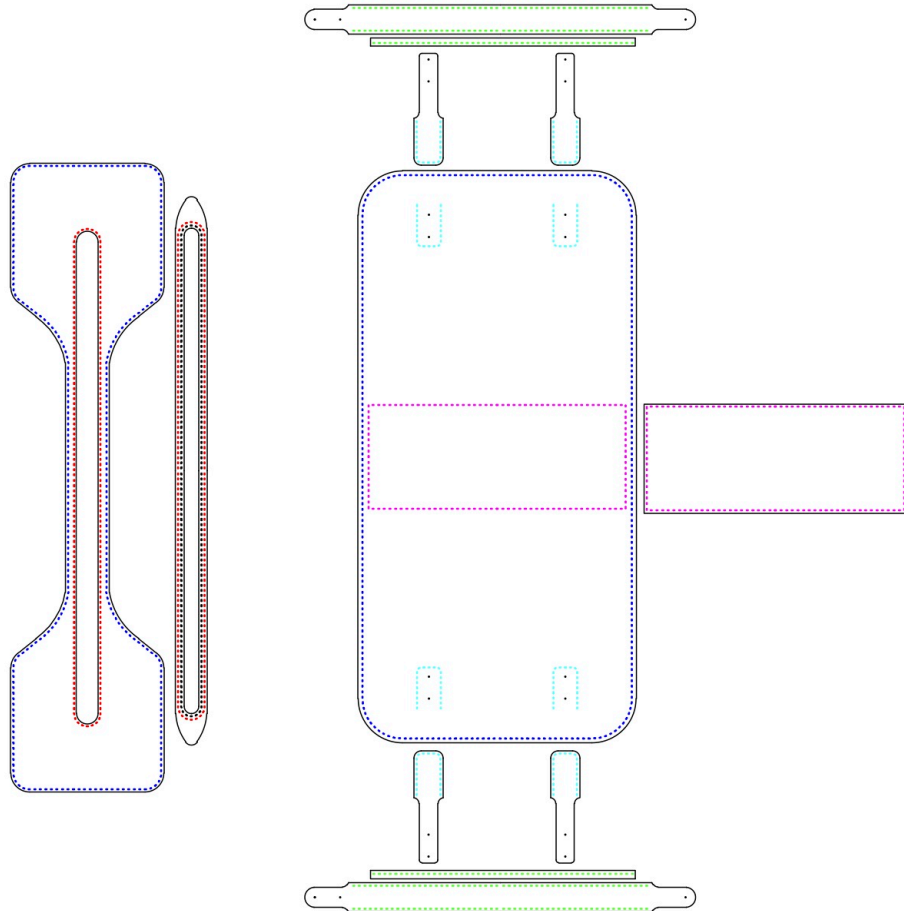


Print all the patterns. Some of them are spread over a few pages so I numbered the pages and made a diagram so it is clear how they should be placed and pasted together

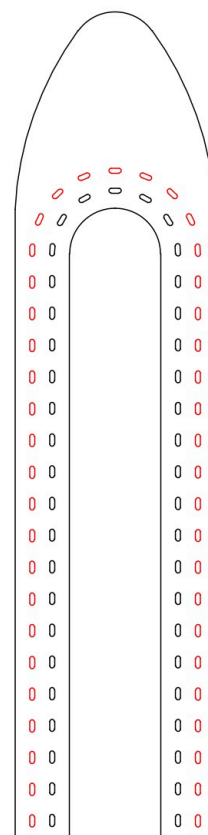


After you are done you should have 12 pieces that will form the two main bodies of the bag and the straps

Note that every stitch hole is marked and color coded so it is very clear where the pieces go together. Only one type of stitching was used, called saddle stitching. Please refer to the video linked below on how the leather pieces are placed.



The black stitch is where the zipper goes.
PRO TIP: if you have access to a leather stitching machine use it for the zipper.
Otherwise hand stitch it in place very carefully as the leather tends to warp and bend around the zipper.



In order to further help with your build, we filmed the entire process from the start to finish.
Please access your instructional video here:

[https://youtu.be/ Tbau9U8Rmw](https://youtu.be/Tbau9U8Rmw)

Would love to see what you did, so please share or leave a review on Etsy.

Stuck and need help? go ahead and send us a message, someone is always around to give you a hand

Thank you for constructing your bag with our patterns

Tony