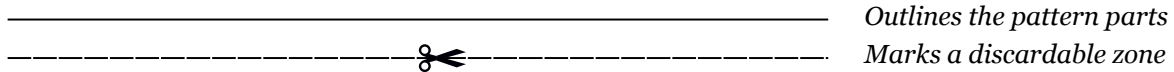


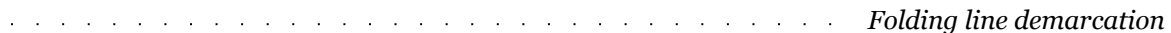
Annotations and general guidelines

- Print this pattern using the US Letter type format regardless of what type of paper you are using and remember to select the option 'Print on entire page' or 'Fit to paper' or 'Disable page margins', based on your printing software. Please mark that this step is mandatory or you won't be printing accurately.

- The parts outlined with a simple line and filled with a gray shade need to be cut out and assembled together after trimming the areas marked with a dashed line and a scissor. Ex:



- The dotted lines represent areas where the leather needs to be folded. Not to be confused with the hollow circles which demarcate rivet holes or stitching holes that are to be punched out. Ex:



- The puzzle piece that you may encounter is there for making sure you are aligning the right pieces in their proper order:



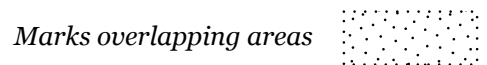
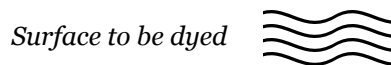
- The outlined circles need to be punched out and the size of the holes will be left out to your preference depending on what type of accessories or tools you are planning to use (rivets, needles, snap fasteners, stitching punches, hole punches, etc). Ex:



- The ruler needs to be measured for accuracy and made sure it's not larger nor smaller than your instrument of measure.



- Wavy surfaces need to be dyed in some color and dotted ones show overlapping parts



- Each part of the project is assigned a number however these parts are represented using a letter as well. For example (1a, 1b, 1c) make up the same part while the letters are there only to hint at the order of assembly which will always be alphabetical, from left to right.

- Numeral numbers represent the steps you need to take towards completing the project. Ex: (I) means that you should begin with that operation, (IV) marks the fourth step to be followed and so on.