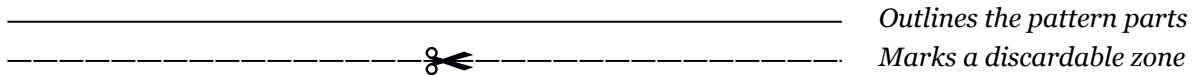


First off, thanks for purchasing this pattern!

- Print this pattern using the US Letter type format regardless of whether you're in Europe or the US and make sure that you disable the page margins from the printing options before you start.

- The parts outlined with a simple line and filled with a gray shade need to be cut out and assembled together after trimming the areas marked with a dashed line and a scissor. Ex:



- The dotted lines represent areas where the leather needs to be folded. Not to be confused with the hollow circles which demarcate rivet holes or stitching holes that are to be punched out. Ex:



- The puzzle piece that you may encounter is there for making sure you are aligning the right pieces in their proper order.



- The outlined circles need to be punched out and the size of the holes will be left out to your preference depending on what type of accesories or tools you have in use (Example: rivets, needles, snap fasteners, stitching punches, hole punches, etc). Ex:



- When you're done with cutting and assembling the pattern parts, I advise using paper adhesive tape in order to steady the pattern on top of the leather. After you've made sure everything is in place and not going anywhere you can begin work by firstly punching out the stitching holes and any other marked out holes, then proceed to cutting the outlined shapes, in this precise order. Try leaving the borders last in case you have to work with a more complex model, such that the pattern will stay fixed on top of the leather all throughout the process.

Required materials

For this project you will need two types of leather (alternatively three). The outer shell part should be malleable but not very thin. I used 1-2 mm (3-4 oz) thick leather for it and it didn't give me any trouble. For the brim of the cap you may use a piece of stiffer, thicker leather (veg tan) or the same as for the rest of the project.

For the lining I used very thin pigskin but you may choose to use the same leather as you plan to use for the shell. I haven't tried this but I think it should work just fine. About 20 - 30 cm of lace will also be needed for tightening the back of the cap and thus achieving a better fit to your head size. All stitching will be achieved using saddle stitch so that should be knowledge you possess before starting this project. Now besides thread and needles that should be it. Ah, and don't forget the masking tape.

Printing guidelines

Print the pattern in the US Letter format and make sure you check the 'Fit to page' button or depending on your printing medium, 'Disable page margins'. If you're not from the US you may print this pattern on A4 paper without any issues, just make sure that you select the proper format (US Letter) when printing. The idea is to print the pattern on the whole page and not fit it to the printable area. This way we ensure that every part will be printed at a 1:1 scale. If you haven't ever used these settings when printing then be sure to print a test page before printing the whole pattern. Also keep in mind that names for the printing settings may vary between the many different types of software out there even though they all lead to the same results.

Preparing the pattern

The way I proceed when cutting the paper parts is to loosely cut around their contours and use them afterwards to mark the leather parts that need to be cut from the larger leather sheets. Make sure to join the parts that display half of a puzzle piece as mentioned in the first page and don't forget to measure the 2 inch reference ruler situated on every pattern page just to make sure you printed the pages using the right settings.

Preparing the leather parts

After loosely cutting the paper and leather parts I then strap them on top of each other using adhesive tape to tightly fit the paper parts on top of the leather ones. This helps a lot when punching out the stitching holes and cutting out the parts. Make sure to firstly punch out every hole that needs to be punched before proceeding to cutting out the actual parts as doing it the other way around will make things harder. Also make sure you use a sharp blade as cutting through paper and leather at the same time tends to rip the paper a bit, especially the low quality type. If you wish to dye and condition your leather and alternatively prepare the edges in case you used thicker leather, then this is the right moment.

Assembling the lining

We'll start with the lining because it will buy me some time into thinking about how to best explain the assembly of the whole thing. It should also warm you up a bit for the more challenging part to come.

Right then, so parts 7, 8 and 9 will be used for putting the lining together into one piece. The way they fit together is also hinted in the pattern but I will explain it nonetheless.

Notice how part 7 is split in half almost throughout its entire length. You need to join the edges of the largest split and stitch them together. You

should also take note that you need to sew them together with the grain sides of each part facing each other as this stitch is meant to be hidden.

When you're done with part 7 we will mind parts 8 and 9 that have a split along their middles meant to better accommodate the curved shape of the head when stitched up. Be sure to join these splits before proceeding to joining parts 8 and 9 along their straight ends as hinted in the pattern. Again you need to hide this stitch so sew the two parts with their grain sides facing each other.

Assuming you're done with the last step now you need to join the latter 3 parts together. The joined parts 8 and 9 will form a longer part that needs to be stitched along the perimeter of part 7 as hinted in the pattern. Just make sure that the grain or flesh side of each part points in the same direction and you'll be fine. If you're having trouble with this step, then take another look at the product pictures or do me the pleasure of a nice chat.

The upper shell

Hopefully you had some fun and a bit of warm up with the lining. We'll be making the shell of the cap now and this will take a bit more time and work.

Let's begin with part 1 which has a long split along its length that needs to be stitched up to form a nice curve. You may have noticed by now that there are three parallel rows of holes and we will clarify that. See how the finished product has two parallel stitches along the lines where every part meets. This is because the edges have been folded in and stitched to the inner side of the part, achieving the effect of a neater surface for the shell and also preventing these edges from hindering the wearer. The row of holes where the parts will meet each other is always the middle one so having settled that, proceed to joining the split of part 1.

After joining the split edge, proceed to folding and stitching the edges inside as mentioned earlier. Note that you will repeat this operation with

the other joining parts as well and this is also the point where having used less stiff leather should make your work easier.

The cap shell sides and back

*The sides of the shell are made up of parts **2** and **3**. Notice once more how these parts are split along their middles so when you're ready you may proceed to stitching those edges together with the flesh sides facing each other as this stitch, again should not be visible.*

*These parts are mirrored but their position is mentioned in the pattern with 'Left side' and 'Right side' or indicated on the surface of part **1**.*

*You need to join these parts with part **1** in their corresponding places and proceed to stitching them in a similar manner as you did with the split side of part **1**.*

*Before starting to sew please take a look at part **1** in the pattern and notice how some holes are to be skipped along its edges that need to be folded in. This is because the curved outer perimeters of the edges of part **1** are somewhat smaller than the inner perimeters along which the corresponding holes are placed. There are three places on each side where there are no corresponding stitching holes for where the edges need to be folded in and stitched again so make sure to make as many false stitches on the front side of part **1** when you reach those areas. This is a **very important aspect** and hopefully you will not be overlooking this section.*

*There is a silver lining however, you only need to skip stitches for part **1** and not for parts **2**, **3** or **4** as well so please go ahead and finish stitching the remaining folded-in edges so we may get to the next part.*

*Assuming you're done with parts **1**, **2** and **3**, you will now have to join part **4** to the assembly. By now you must be familiar with the stitching method so make it snappy so we may proceed further.*

The brim of the cap

*The brim of the cap will be made up of one piece resembling part **5** if you decided to use thicker leather, or two pieces of part **5** and one of **5d** if not. You will also need to print another page that contains part **5** for the second method. The idea to the second option is to sandwich the **5d** part between the two parts **5** to provide a bit of stiffness to the assembly. I chose the latter method but I have experimented with the first one as well to a satisfying result.*

*Working with the second method you should glue part **5d** between the two parts **5**, right on their flesh sides.*

*Having done this you now need to join the brim to the outer shell. This is achieved by sewing the brim on top of the shell and not under it. **This is very important** because after stitching we need to turn the brim the other way around so that the leather edges will be hidden. Place the brim on top of the shell and begin stitching from one edge towards the other. When done turn the brim on the other side to make the assembly look like the one presented in the pictures. If you're having trouble understanding this part please send me a message and we will clarify the whole matter.*

*If you chose the first method and used one piece of vegetable tanned leather then you may skip part **5d** all along. When stitching the brim to the cap shell you need to place it with its grain side facing the shell's grain side as well. This is because after turning it inside out, the grain side of the brim part should be visible.*

Lining the interior

*You should now be left with the lining, the shell and part **6** which will have to wait for a bit.*

Place the lining inside the cap shell and begin stitching it perimetally to the shell, starting from the back (near the split). The stitching should be done on the lowest row of holes as the upper one will be required when folding in the edges of the shell.

When done with the first stitch you may go ahead and make the upper one as well. Again the leather needs to be folded in but this time there will be more leeway as the distance between the rows of holes is a bit longer.

The last thing will be joining part 6 to the back of the shell. I left this for the end because the stitching must be made by passing through the lining as well. Also the marked holes through which the lace is to be passed are to be punched through all the pieces of leather. There is no mandatory size for these holes so you should make them as you see fit, making sure you are right on the mark when proceeding to punching out the holes.

This is it! Assuming you haven't cursed a lot, then I hope you had fun and that this guideline has been useful to you. If you need any help please contact me at any time. Also don't forget to check out my page from time to time <https://leatherhubpatterns.com> as I try to come up with new stuff all the time. Thanks again!